



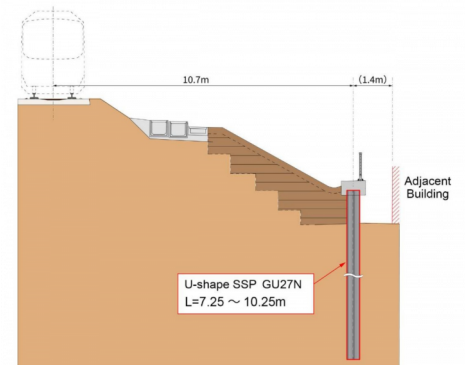
U Sheet Pile Press-in Method



GRB System

Non-staging Method

Rail Safe Method



Project Name	Ersatzneubau EÜ Wiesenweg
Purpose of Project	Railroad Rehabilitation Work
Location	Wiesenweg, 10365 Berlin, GERMANY
Project Owner	Deutsche Bahn AG (German railway)
Main Contractor	Echterhoff Bau GmbH
Piling Contractor	Giken Europe B.V.
Duration	May 2021 to July 2021
Press-in Machinery	F401-1400, UR3, CB3-6, PR4
Pile Section & Length	U type sheet pile (GU27N) Length = 7.25 to 10.25m, 187 pairs (374)
Features & Remarks	The project site was located in a confined space adjacent to residential district and live railway which was an excellent opportunity to demonstrate the benefits of the GRB system. All piling works were completed on top of the installed piles and eliminates the need for temporary platforms and workspaces for cranes materials and other construction equipment. The F401-1400 was used to install 600mm wide U piles in 1200mm wide pairs resulting in a 224m wall.

