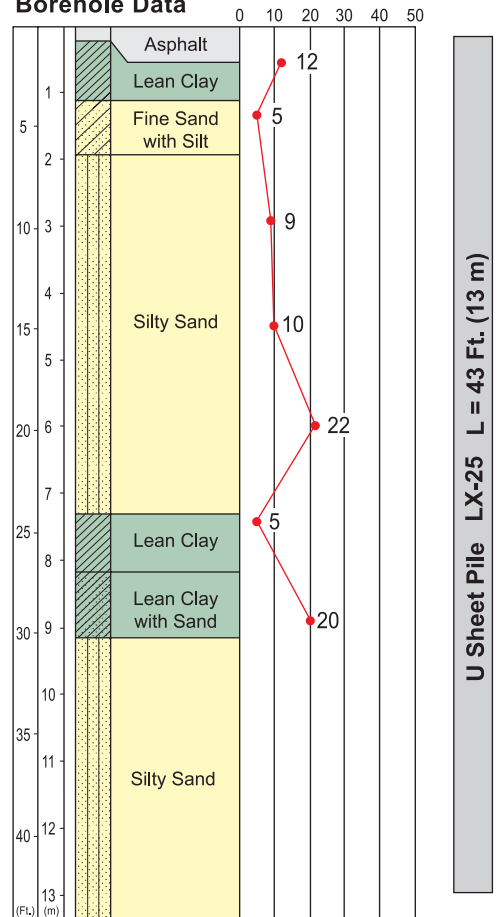


Drain-Unit 8A, Hollyhills



Borehole Data



Type of Project	Drainage Improvements
Purpose of Piling	Temporary Shoring for 20 ft Excavation
Site Location	West Hollywood, California, U.S.A.
Duration of Work	September, 2003 to March, 2004
Client	Los Angeles County Department of Public Works
Piling Contractor	Giken America Corporation
Press-in System	Press-in Method with Simultaneous Augering
Press-in Material	U Sheet Pile LX-25 L=43Ft. (13m)
Press-in Machinery	Super Crush U Piler SCU-600M
Method Description	A deep excavation was required to install the new drainage system within a residential neighborhood. Sheet piling with interlock sealant was selected to minimize dewatering. The sheet piles had to be installed to meet the county's strict noise and vibration policy.