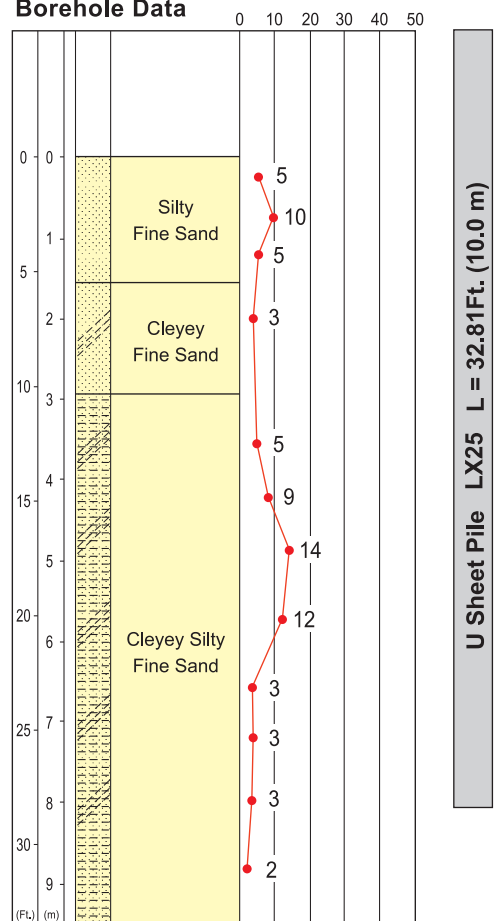


Dean Road Toll Plaza



Borehole Data



Type of Project	Toll Road Plaza widening
Purpose of Piling	Permanent retaining wall for foundation construction
Site Location	Orlando, Florida, U.S.A.
Duration of Work	October 15 to October 19, 2002 (Two locations)
Client	Southland Construction Company and Florida's Turnpile Enterprise
Piling Contractor	Giken America Corporation
Press-in System	Press-in method with integral water injection system
Press-in Material	U Sheet Pile LX25 L=32.8Ft. (10.0m)
Press-in Machinery	U Piler UP150
Method Description	Vibration free and silent piling method needed to install steel sheet piles very close to Toll Plaza structure. Compact machine needed for limited access near live traffic.