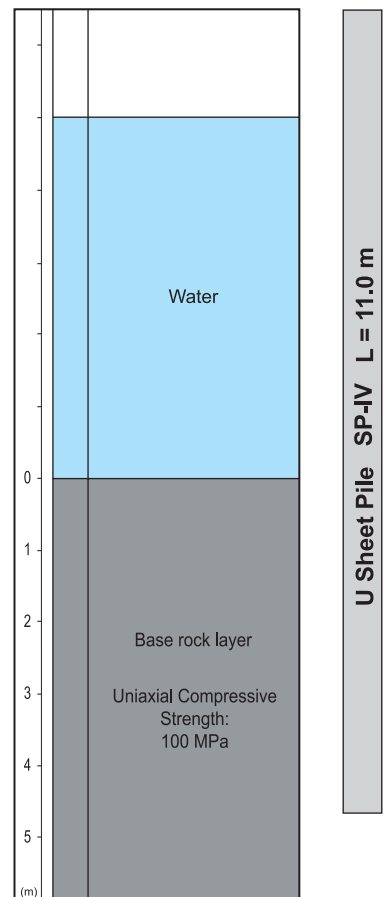


Hard Ground Press-in Method



Borehole Data



Type of Project	Construction of New Water Intake Pumping Station
Purpose of Piling	Permanent Retaining Wall
Site Location	Kandy, Sri Lanka
Duration of Work	July to September 2004
Client	National Water Supply & Drainage Board
Piling Contractor	Giken Asia Corporation
Press-in System	Press-in Method with Simultaneous Augering
Press-in Material	U Sheet Pile SP-IV L=8.0 - 11.0m 210 nos.
Press-in Machinery	Super Crush Piler SCU400M
Method Description	Installation into base rock layer. Water pollution-free method was required.