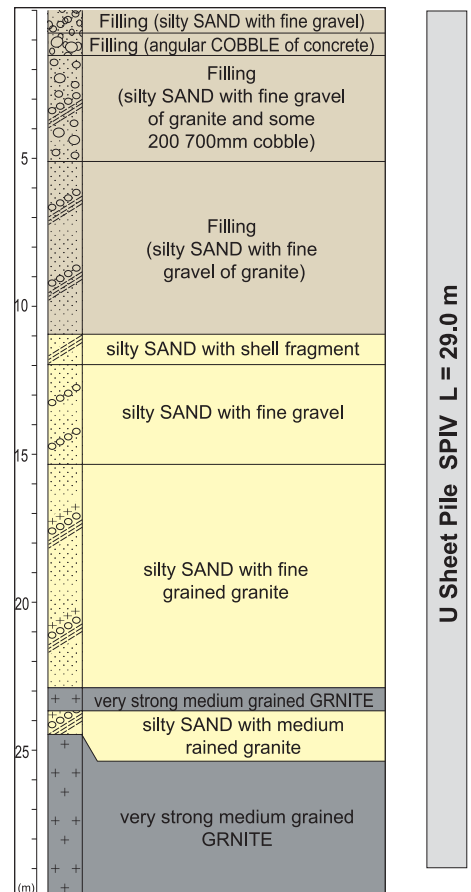


Hard Ground Press-in Method



Uniaxial Compressive Strength
40N/mm² - 130N/mm²

Borehole Data



Type of Project	Construction of East Tsim Sha Tsui Station and pedestrian subway
Purpose of Piling	Temporary Retaining Wall
Site Location	Tsim Sha Tsui, Kowloon, Hong Kong
Duration of Work	June to December, 2001
Client	Kowloon-Canton Railway Corporation
Piling Contractor	Giken Asia Corporation
Press-in System	Press-in Method with Simultaneous Augering
Press-in Material	U Steel Sheet Pile SP-IV L=29.0m
Press-in Machinery	Super Crush U Piler SCU-400M
Method Description	Cobbles (φ 200-700mm) contained. Minimum working space. Vibration free safety operation adjacent to existing structure. No temporary working platform..