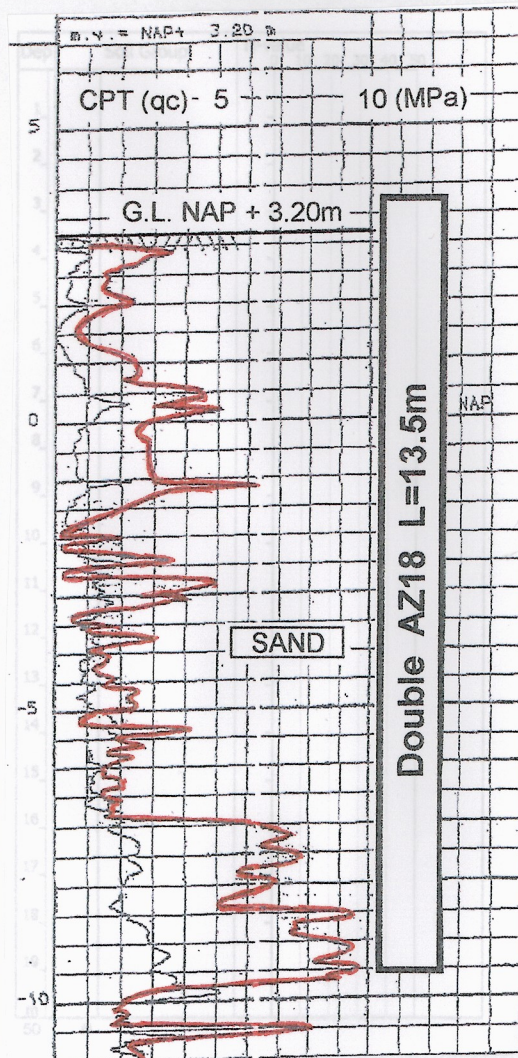


# Z Sheet Pile Press-in Method



Project Name	De Nieuwe Mark - verdiepte river te Breda
Purpose of Piling	River Work
Location	Breda, THE NETHERLANDS
Employer	City of Breda
Main Contractor	Colijn Aannemersbedrijf BV
Piling Contractor	Giken Europe
Duration	November 2006 to November 2006
Press-in Machinery	Super Crush SCZ-675WM
Pile Section & Length	Double AZ18, 96no. L=13.0 - 13.5m
Features & Remarks	Silent and vibration-free method No disturbance to leaning historic building