

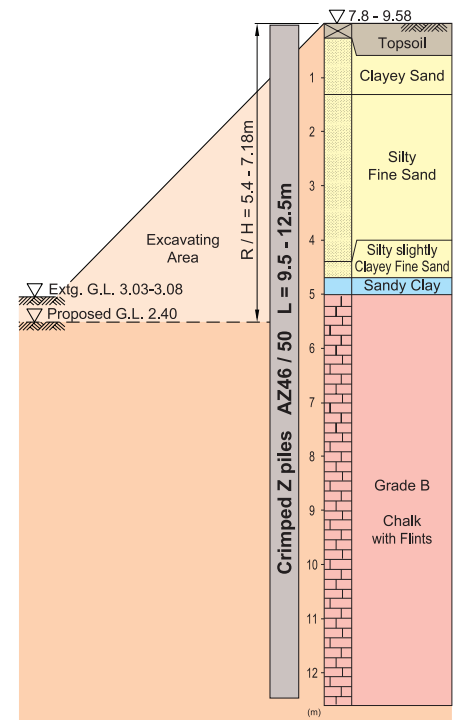
West Street, Erith, Kent



Post Excavation



Borehole Data



Type of Project	Property Development (4 to 5 storey flat)	Piling Contractor	Giken Europe B. V.
Purpose of Piling	Permanent Retaining Wall	Press-in System	Press-in Method with Simultaneous Augering
Site Location	Erith, Kent, U.K.	Press-in Material	Crimped Z piles AZ46/ 50 L=9.5-12.5m 36nos.
Duration of Work	From Nov. 2005 to Dec. 2005	Press-in Machinery	Super Crush Z Piler SCZ-675WM
Employer	Orbit Housing Association	Method Description	Rapid construction based on "One step approach" - temporary free works Silent and vibration-free operation Press-in work into flint mixed chalk
Consultant Engineer	Powell Tolner & Associates		
Main Contractor	Hill Partnerships Ltd.		