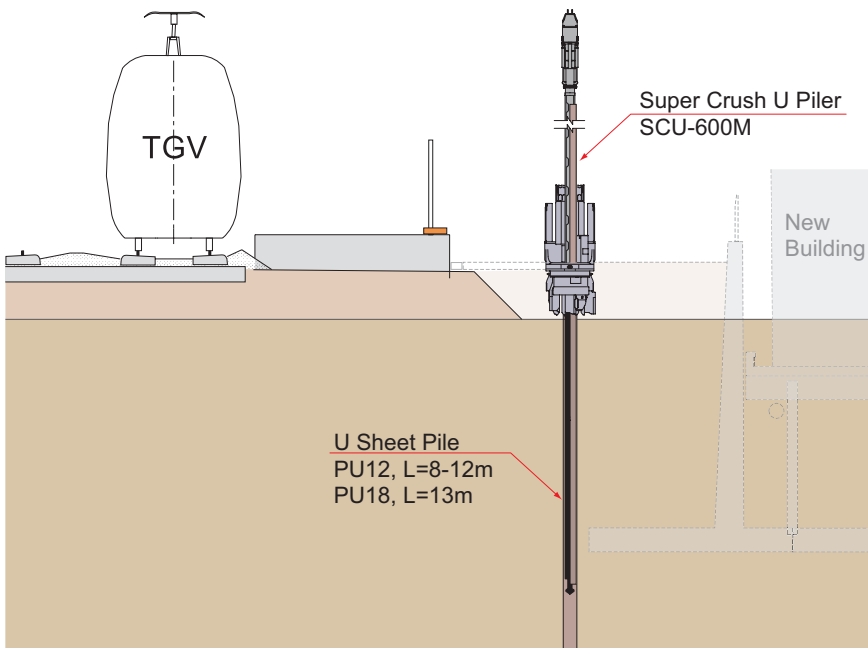


Pole d'Echanges Multimodal du Le Mans



Depth (m)	Soil Type	Em (MPa)				PI (MPa)
		0	10	20	30	
1	Fill Sandy Gravel					0.23
2	Filling Clayey Sand					0.58
3						0.28
4	Sand and Gravel					6.34
5						8.14
6	Sand and Clayey Gravel					4.13
7						4.32
8	Clay and Fine Sand					1.47
9						1.68
10						7.17
11						2.09
12						3.79
13						2.50
14						3.97
15						3.63
16					4.27	

U Sheet Pile PU12 L = 12.0 m

Type of Project	Building
Purpose of Piling	As a cofferdam of the basement construction
Site Location	Le Mans, France
Duration of Work	From 24 Jul 2006
Client	SNCF and Le Mans Metropole (2 clients)
Main Contractor	Eiffage TP
Piling Contractor	Giken Europe BV

Press-in Material	U Sheet Pile PU12, L=8-12m, 550 pieces PU18, L=13m, 43 pieces
Press-in Machinery	SCU-600M
Method Description	Noise and vibration free operation adjacent to existing rail way (TGV). Pile installation into the hard ground condition.