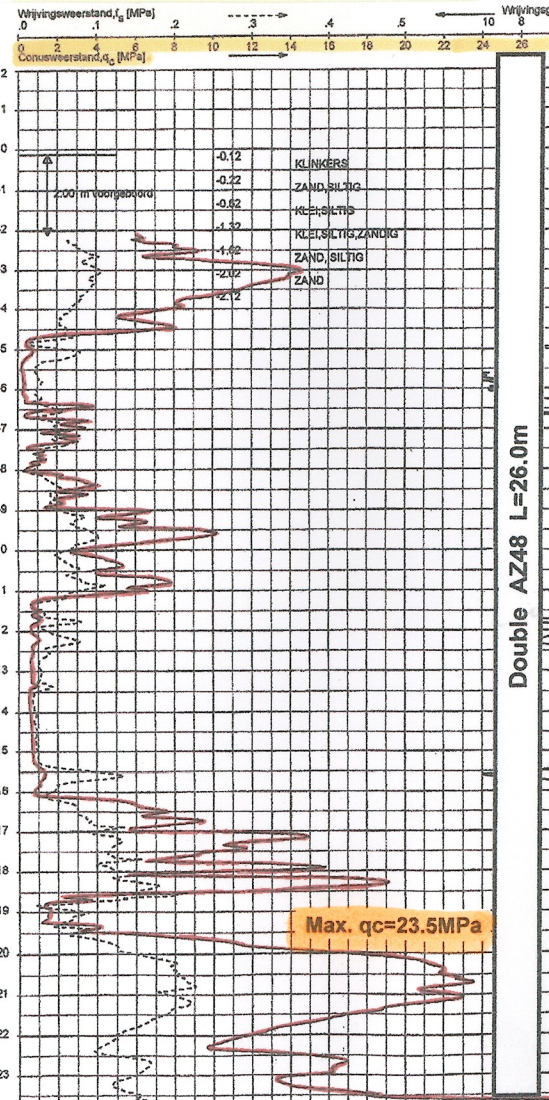
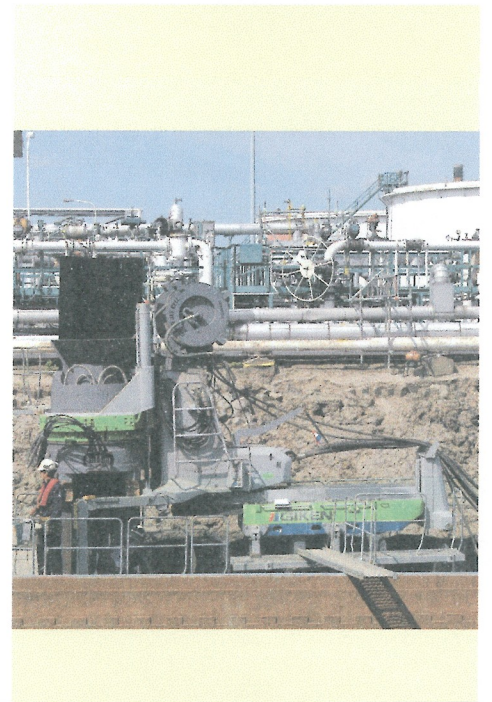




Z Sheet Pile Press-in Method



Water Jet Press-in Method



Project Name	Petroleumhaven Rotterdam
Purpose of Piling	Canal Work
Location	Rotterdam, THE NETHERLANDS
Employer	Exxon Mobil Corporation
Main Contractor	Hakkers
Piling Contractor	Giken Europe
Duration	December 2005 to June 2006
Press-in Machinery	Super Crush SCZ-675WM
Pile Section & Length	122no. Double AZ18/ AZ26/ AZ38/ AZ48 L=10.65 - 26.0m
Features & Remarks	Silent and vibration-free method No disturbance to adjacent oil storage facilities Achieved to install long piles into dense sand layer