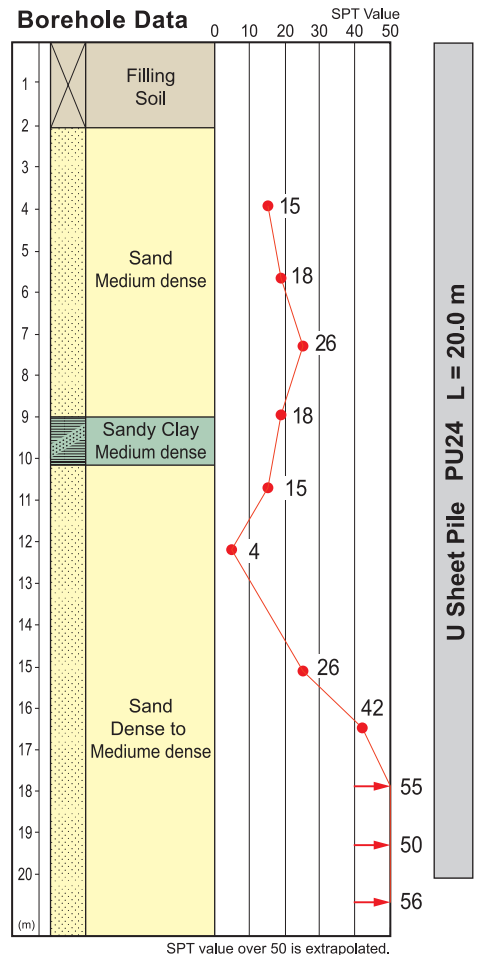


Hard Ground Press-in Method



Type of Project	New Metro Rail Track Construction
Purpose of Piling	Permanent Retaining Wall Installation
Site Location	Perth, Australia
Duration of Work	October to December 2004
Client	Perth Transport Authority
Piling Contractor	Giken Asia Corporation
Press-in System	Press-in Method with Simultaneous Augering
Press-in Material	U Sheet Pile PU24 L=15.0 - 20.0m PU16 L=16m
Press-in Machinery	Super Crush Piler SCU600M
Method Description	Environmentally friendly piling work in residential area. Safe and secure operation adjacent to rail track. Maintaining regular train service during piling operation.