

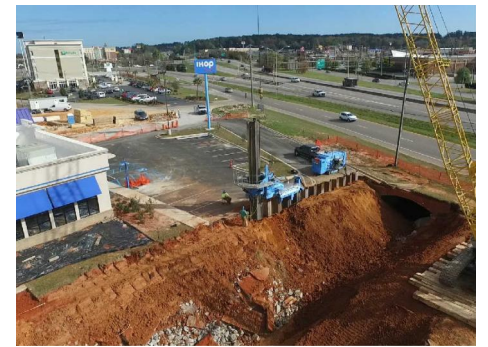
Massive Drainage Collapse in Mississippi



Z Sheet Pile Press-in Method



Courtesy Aaron Morrison



Sheet Piling



Completion of Sheet Piling



Top: After Parking Lot Collapse Bottom: Sheet Piling

Project Name	Massive Drainage Collapse in Meridian, MS
Purpose of Project	Drainage Work
Location	UNITED STATES
Employer	City of Meridian
Main Contractor	Hemphill Construction Company
Piling Contractor	Blue Iron LLC
Duration	November 2015
Press-in Machinery	Silent Piler GV-ECO1400S
Pile Section & Length	JZ112, 120, 127 L=53'
Features & Remarks	Emergency repair work was performed at a ditch collapse incident that happened on November 7, 2015 in Meridian, MS. Sheet pile driving was necessary for the emergency project. However, due to the risk of a secondary disaster occurring at an adjacent building by using a vibratory hammer, the Silent Piler was chosen to press in the sheet piles.

