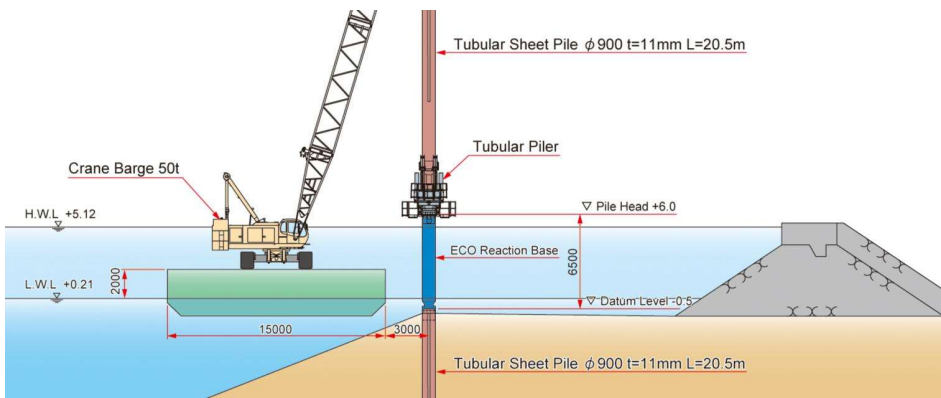




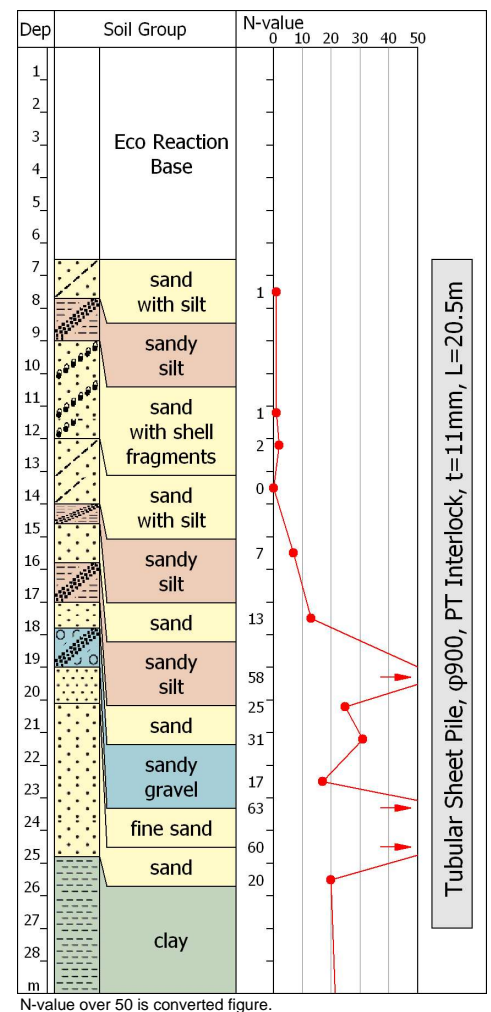
Tubular Sheet Pile Press-in Method



Water Jet Press-in Method



Project Name	Waterway Renovation Construction
Purpose of Piling	Port Work
Location	Omuta, Fukuoka, JAPAN
Employer	MLIT, Kyushu Regional Bureau
Main Contractor	Mirai Construction Co., Ltd.
Piling Contractor	Giken Seko Co., Ltd.
Duration	June 2006 to September 2006
Press-in Machinery	Tubular Piler PP260B, Eco Reaction Base
Pile Section & Length	d=900, t=10 & 11mm, PT Interlock, L=20.0-20.5m, N=140
Features & Remarks	Cutting work cost and material cost of tubular sheet piles were greatly reduced by the Eco Reaction Base. There is no disturbance on the water traffic. Bio-degradable items, Piler Eco Oil and Piler Eco Grease, for measures against soil / water contamination.



N-value over 50 is converted figure.