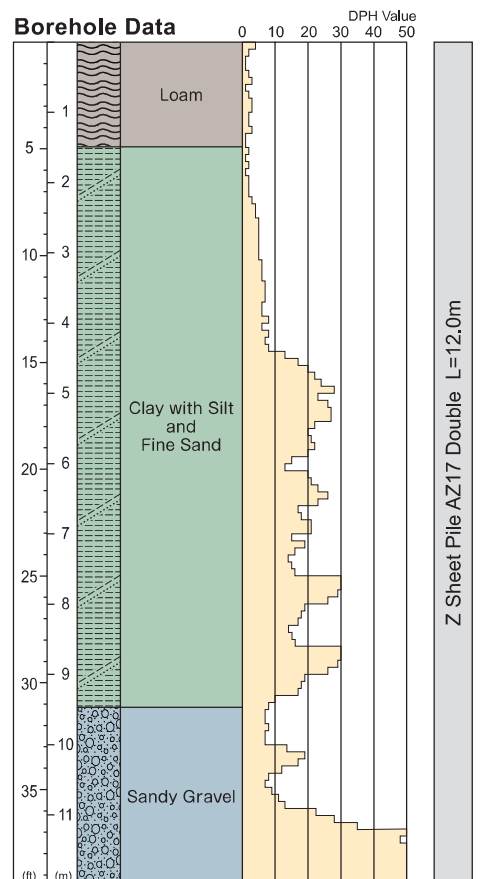


HWS Torgau Breich Stehla



Type of Project	Flood Defense Project		
Purpose of Piling	Flood and Tidal Defense		
Site Location	Torgau, Germany		
Duration of Work	21 November to 18 December, 2008		
Client	Landestalsperrenverwaltung des Freistaates Sachsen		
Consultant	INGENIEURGEMEINSCHAFT WTU GmbH		
Main Contractor	EZEL Torgau GmbH	Piling Contractor	Giken Europe B.V.
Press-in System	Press-in method with Simultaneous Augering		
Press-in Material	Z Sheet Pile AZ17 Double L=6.0m 190 pieces L=12.0m 286 pieces		
Press-in Machinery	SCZ675WM		
Method Description	Super Crush system was selected for the measures against noise and vibration, since the sheet piling alignment was close to residential area. It was remarkable contribution to the flood defense project of Elbe river.		