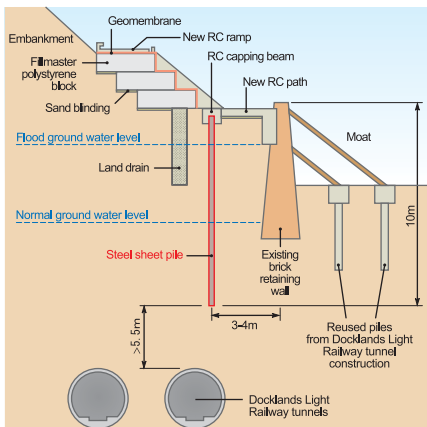
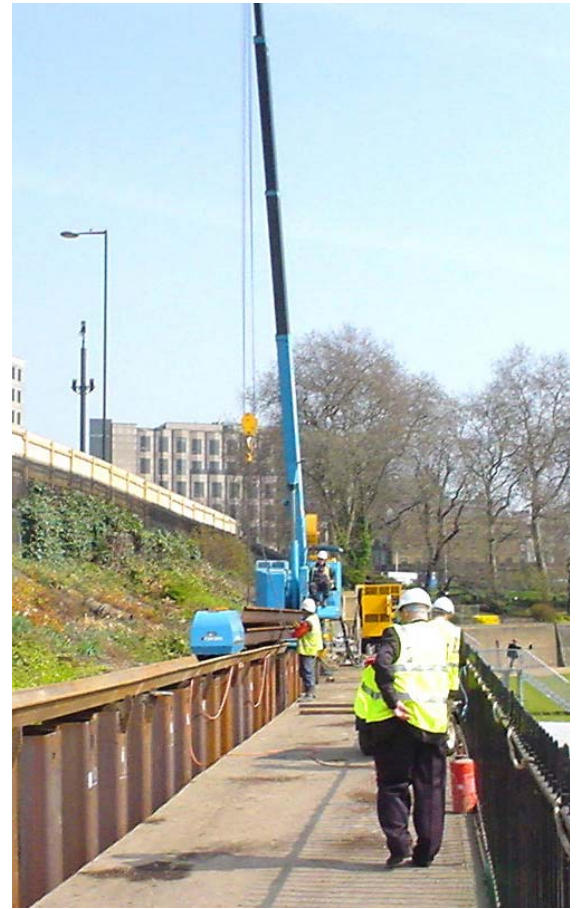
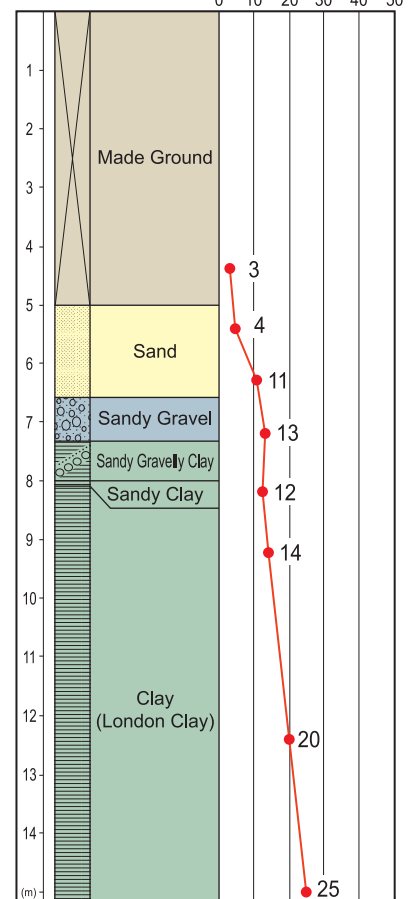


GRB Non-staging Method



Borehole Data



Type of Project	Renovation of the private footpath
Purpose of Piling	Retaining Wall for New Ramp
Site Location	City, London, U.K.
Duration of Work	April to May, 2003
Client	Historic Royal Palaces
Piling Contractor	GIKEN EUROPE B.V.
Press-in System	Press-in Method with Water Jetting
Press-in Material	U Sheet Pile LX32 L=9.0 - 11.0m 138nos.
Press-in Machinery	U Piler SW100
Method Description	Penetration into London Clay. Piling work close to existing historical brick retaining wall and railway tunnels..