

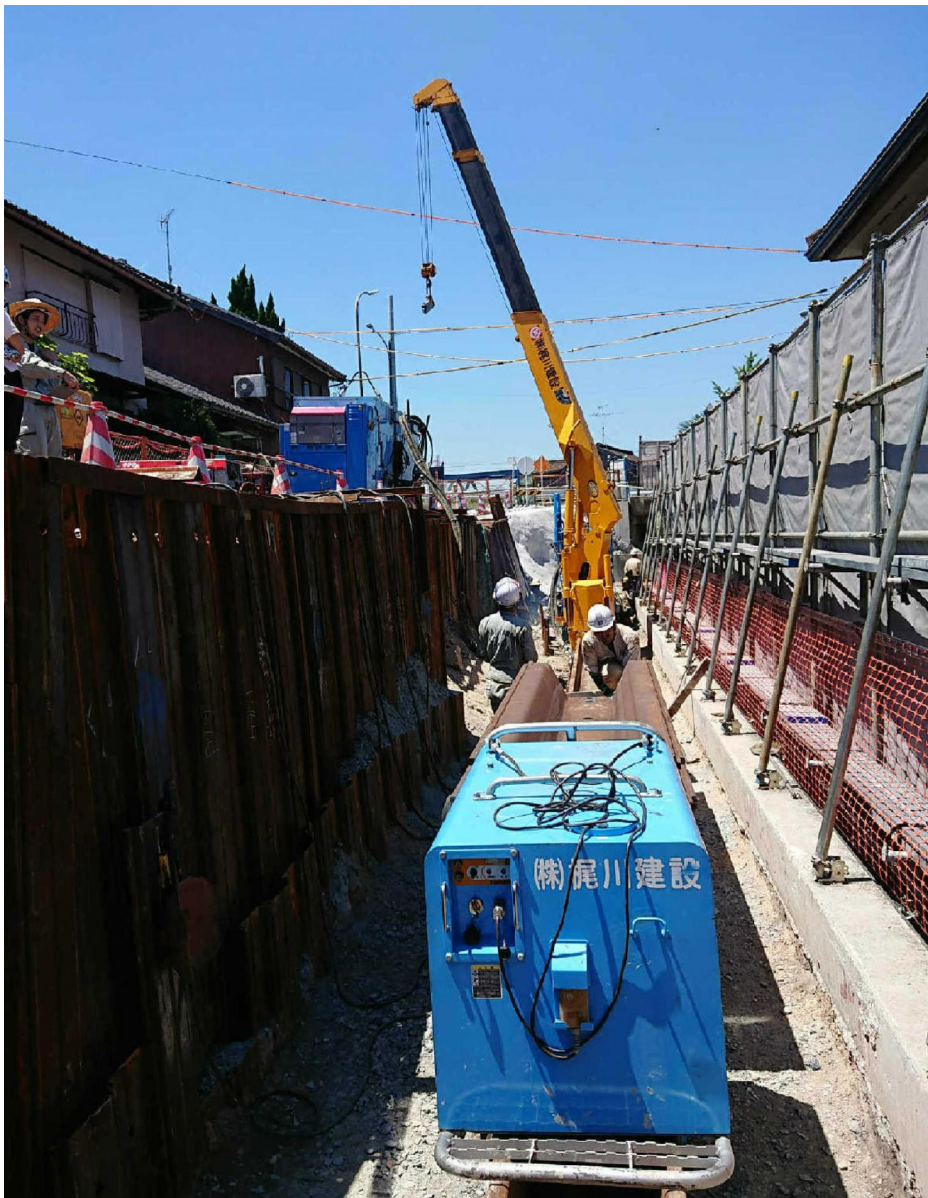


# Hat Sheet Pile Press-in Method



J P N

Non-staging Method



Construction work in progress



Construction work in progress



Construction work in progress

|                       |  |
|-----------------------|--|
| Project Name          | River improvement work (Disaster prevention measures)  |
| Purpose of Project    | River revetment improvement  |
| Location              | Genbe-cho, Minami-ward, Nagoya-city, Aichi, JAPAN  |
| Project Owner         | Aichi Prefectural Government   |
| Main Contractor       | YAHAGI CONSTRUCTION CO., LTD.  |
| Piling Contractor     | KAJIKAWA CORP.   |
| Duration              | July 2019 to August 2019   |
| Press-in Machinery    | Silent Piler ECO900, Clamp Crane CB1, Pile Runner PR-1   |
| Pile Section & Length | Sheet pile (25H), L=12.5m(0-2 joints)  |
| Features & Remarks    | <ul style="list-style-type: none"> <li>- The advantage of using this method is to minimize the impact on neighboring communities even when the construction site is limited.</li> <li>- Despite overhead power lines, the construction work was able to be completed without any trouble.</li> </ul> |

