

# Carpet N' Drapes Culvert Rehabilitation



Z Sheet Pile Press-in Method



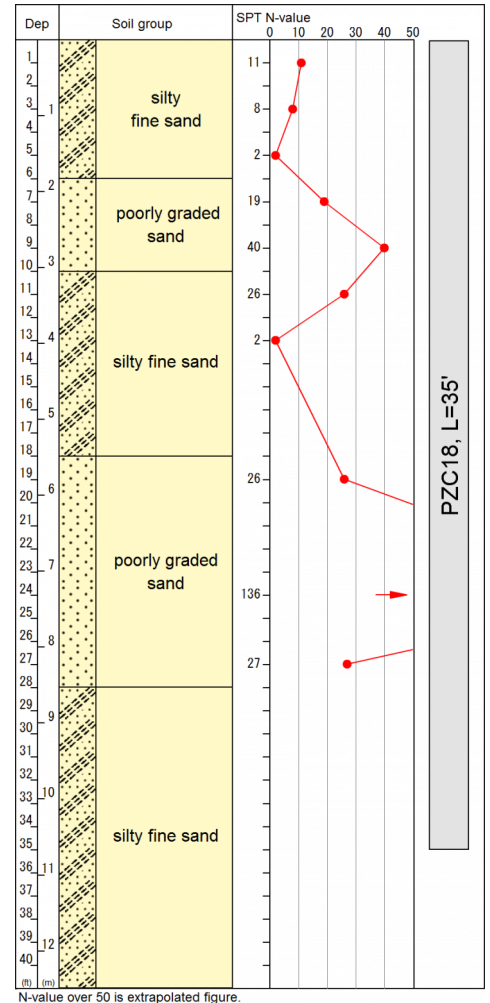
Under Construction



Before Construction



Completion of Sheet Piling



Project Name	Carpet N' Drapes Culvert Rehabilitation
Purpose of Project	Culvert Rehabilitation
Location	UNITED STATES
Employer	Clay County
Main Contractor	N/A
Piling Contractor	Giken America Corporation
Duration	October 2007
Press-in Machinery	Super Crush SCZ-675WM
Pile Section & Length	PZC18, L=35'
Features & Remarks	<p>Due to heavy rain, a storm drain culvert collapsed, resulting in the above ground to collapse as well.</p> <p>In consideration of the risk of a secondary disaster occurring at an adjacent building by using a vibratory hammer, the Silent Piler was chosen to press in the sheet piles.</p>