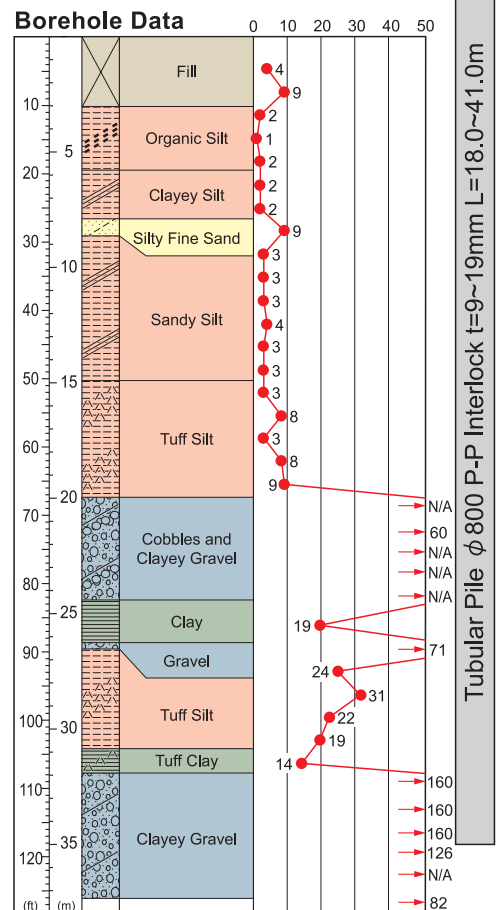
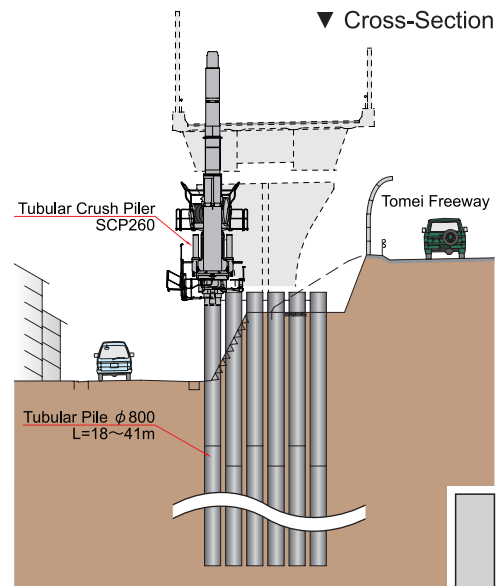
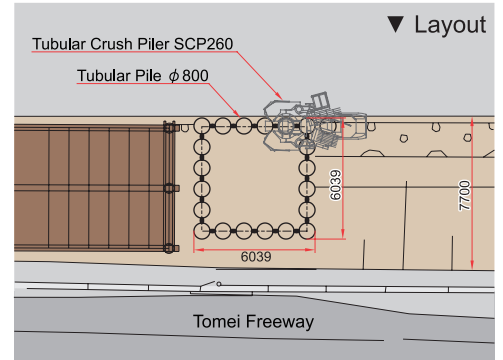


# Tomei Freeway, Atsugi Interchange Bridge Renovation Works



SPT value over 50 is extrapolated.

Type of Project	Road Work
Purpose of Piling	Renovation Work for Freeway
Site Location	Atsugi, Kanagawa Prefecture, Japan
Duration of Work	February, 2004 to September, 2006
Client	Nippon Expressway Company Limited, Tokyo Construction Office, Atsugi Office
Main Contractor	Aisawa Kogyo & Mori Gumi JV
Piling Contractor	Giken Seko Co.,Ltd.
Press-in System	Super Crush System
Press-in Material	Tubular Pile φ800,900 P-P Interlock t=9~19mm L=18.0~ 41.0m 185 pieces
Press-in Machinery	Super Crush Tubular Piler SCP260, Clamp Crane CB-1, Pile Runner TB4
Method Description	<p>The silent piling work was carried out at a narrow working space, a slope area of the expressway, without disturbing neighbor's daily life.</p> <p>The Super Crush System requires minimum range of augering area so that the system can installed firm baring piles.</p> <p>The Press-in Monitoring System can monitor baring capacity of the installed piles to ensure the capacity of the pile structure.</p> <p>*NETIS No. CB-980118-V, CB-980119-A</p>