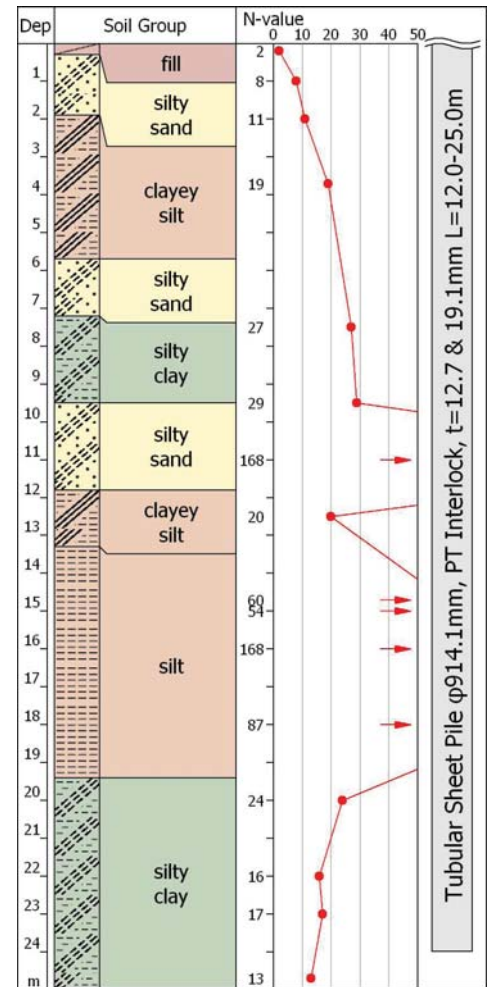
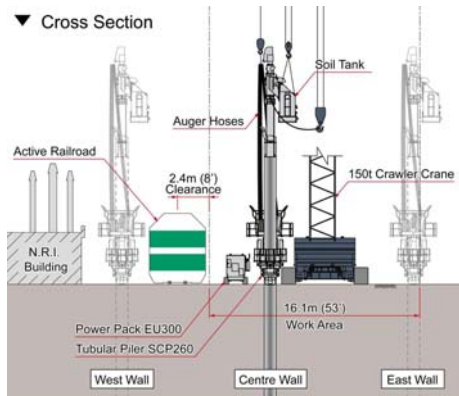




Hard Ground Press-in Method



Tubular Sheet Pile Press-in Method



Project Name	West Toronto Diamond Grade Separation
Purpose of Piling	Construction of semi-subterranean subway rail
Location	Toronto, CANADA
Employer	Go Transit
Main Contractor	West Diamond Joint Venture
Piling Contractor	Giken America Corporation
Duration	September 2009 to September 2010
Press-in Machinery	Tubular Piler SCP260
Pile Section & Length	$d=914.1\text{mm}$, PT Interlock, $t=12.7$ & 19.1mm , $L=12.0-25.0\text{m}$, $N=522$
Features & Remarks	No negative impact to neighbors and near the commercial facility. Sheet piling work at the silt layer with gravel with SPT N-value over 160. Safety piling work without disturbing active railway service. There is the adjacent building 2 meters from the press-in line.