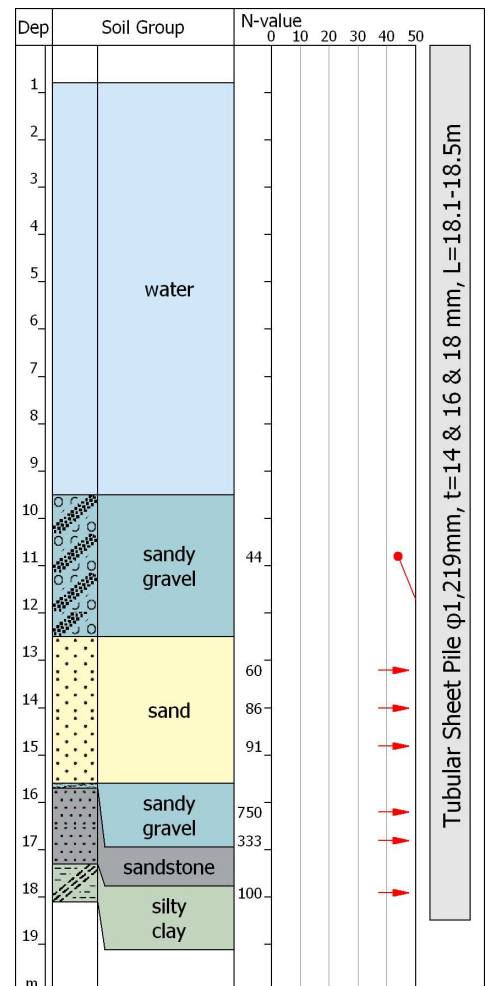
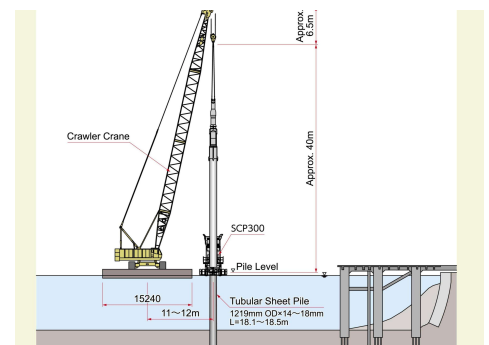




# Tubular Sheet Pile Press-in Method



**Hard Ground Press-in Method**



Project Name	Crossrail Canary Wharf Isle of Dogs Station
Purpose of Piling	Canal Work
Location	Canary Wharf, London, UNITED KINGDOM
Employer	Canary Wharf Contractors Limited
Main Contractor	Expanded Limited
Piling Contractor	Giken Europe B.V.
Duration	April 2009 to October 2009
Press-in Machinery	Super Crush Tubular Piler SCP300
Pile Section & Length	d=1,219mm, PP Interlock, t=14 & 16 & 18 mm, L=18.0-18.5m, N=303
Features & Remarks	No negative impact to the neighbour office building. Realisation of high-strength retaining wall by high-quality prefabricated piles. Rapid piling progress by using multiple Silent Pilers.