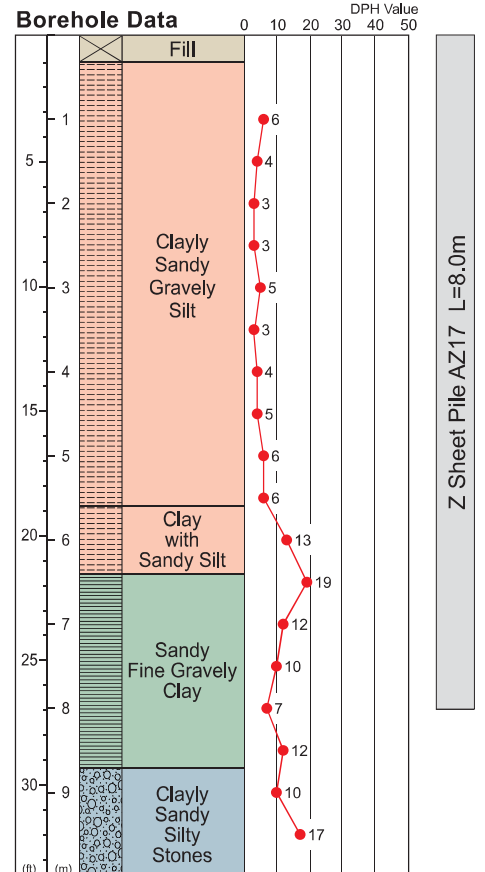
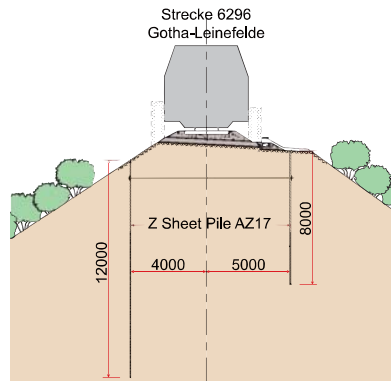


Neubau Stuetzbauwerke Streck 6296 Gotha-Leinefelde



Type of Project	Railway Renovation Project		
Purpose of Piling	Reinforcement of track embankment for railways		
Site Location	Gotha-Leinefelde line, Germany		
Duration of Work	12 February, 2006 to 20 August, 2008		
Client	DB (Duetche Bahn) Dresden	Consultant	Spiekermann
Main Contractor	Sachsische Bau GmbH	Piling Contractor	Giken Europe B.V.
Press-in System	GRB system		
Press-in Material	Z Sheet Pile AZ17 L=4.0m 1,864 pieces L=6.0~12.0m 1,865 pieces Sheet pile Length are Varied, 6-12m piles are installed after every 4m sheet pile.		
Press-in Machinery	Z Piler ZP100, CB2-5, UR01		
Method Description	Due to the limited working area, all sheet piling activities were carried out by GRB system without disturbing railway service and without damaging the existing track embankment.		