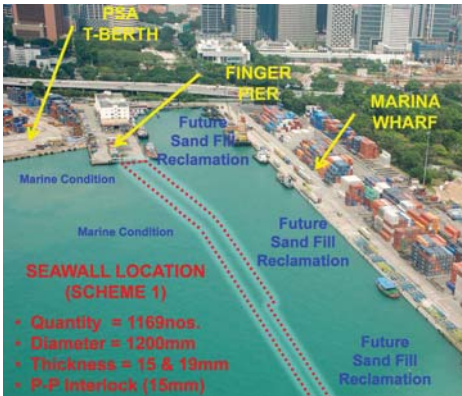




Tubular Sheet Pile Press-in Method



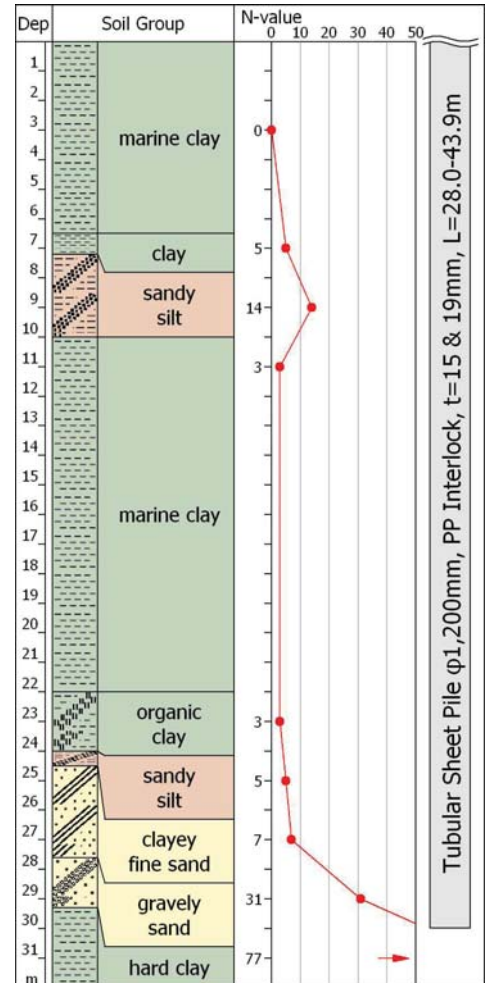
Water Jet Press-in Method



Present

Completion Image

Project Name	C481 Marina Coastal Expressway (Phase 1)
Purpose of Piling	Construction of double cofferdam seawall for new drive expressway
Location	Marina Wharf, SINGAPORE
Employer	Land Transport Authority
Main Contractor	Hock Lian Seng Infrastructure Limited
Piling Contractor	Giken Seisakusho Asia pte., Ltd.
Duration	December 2009 to October 2010
Press-in Machinery	PP300 x 2 units, 4 Water jets
Pile Section & Length	d=1,200mm, PP Interlock, t=15 & 19mm, L=28.0-43.9m, N=1,166
Features & Remarks	No disturbance to active vessel traffic. High installation quality to close cofferdams with 43.9m long tubular sheet piles. Rapid piling progress by multiple Silent Pilers.



N-value over 50 is converted figure.

